

Mr. Titan Heat pumps

MTC130 - MTC160 - MTC210 - MTC260



**AQUA[®]
FORTE**

Channel: MPP - Pool/Non-Pool omnichannel

USP'S

- **Powerful Heating**

- Equipped with a robust configuration, Mr. Titan delivers powerful performance for rapid heating.

- **Double Savings**

- Mr. Titan's COP is up to 16*, which is twice that of traditional On/Off Heat Pumps. To maintain the pool temperature, it mainly runs at medium and low speeds, resulting in double the energy savings. (*Conditions: Air 27°C/ Water 27°C/ Humid 80%)

- **Silent performance**

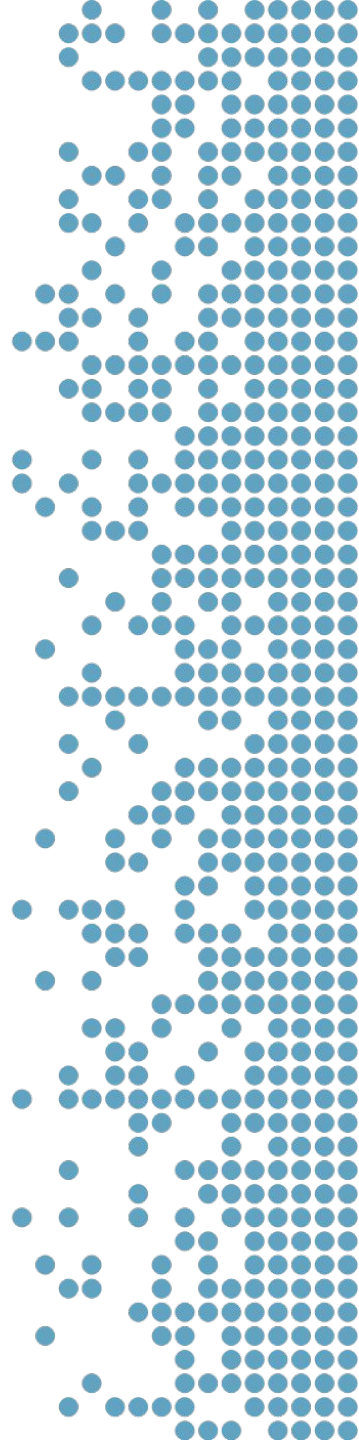
- Mr. Titan's average sound level is as low as 41dB(A) at 1m distance, providing a comfortable pool environment thanks to the outstanding Stepless DC Inverter Technology.

- **Simple Installation**

- Mr. Titan is designed for easy installation. Its compact design and vertical discharge require minimal floor space, making installation more convenient.

- **Smart Touch Controller**

- Mr. Titan's smart touch controller provides a user-friendly operation and smart control options.



Other features

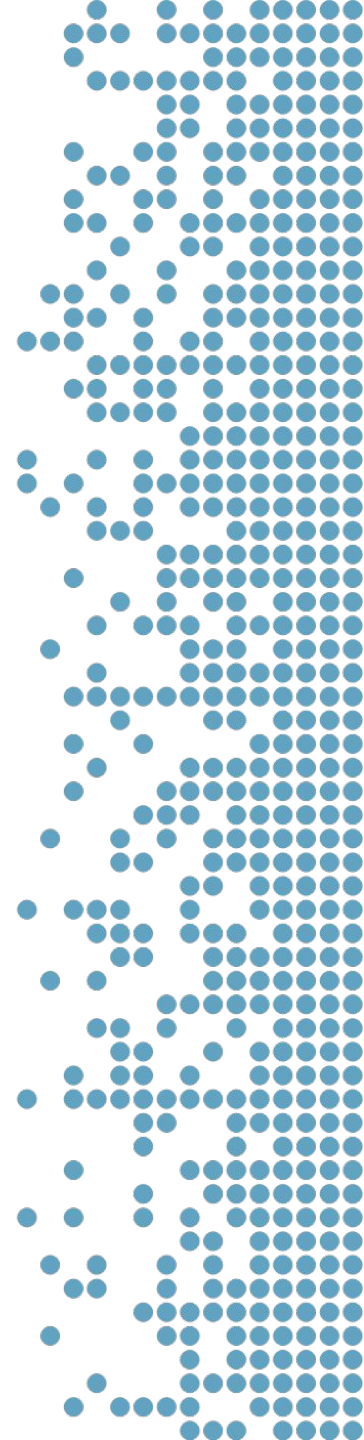
- **R32 gas**
 - Environmentally friendly
- **EEV technology**
 - Increases COP by up to 20%
- **Air operating temperature**
 - Operates down to -10°C
- **Twisted titanium heat exchanger**
 - 40% higher efficiency
- **Reverse cycle defrosting**
 - Quick and efficient defrosting with a four-way valve
- **Spa heating optional**
 - Heats up to 40°C



Technical details

Model	MTC130	MTC160	MTC210	MTC260
SKU	77582	77581	77583	77580
PERFORMANCE CONDITION: Air 27°C/ Water 27°C/ Humid. 80%				
Heating capacity (kW)	13,5	16,5	21,0	26,0
Heating capacity (kW) in Silence mode	11,3	14,3	18,7	23,8
COP range	15~6.9	15.2~7.2	15.9~7.0	15.0~6.9
Average COP at 50% speed	11,5	11,6	11,8	11,5
PERFORMANCE CONDITION: Air 15°C/ Water 26°C/ Humid 70%				
Heating capacity (kW)	10,0	11,7	15,1	18,6
Heating capacity (kW) in Silence mode	8,6	10,1	13,2	17,2
COP range	7.1~5.0	7.2~5.1	7.8~5.0	7.5~4.8
Average COP at 50% speed	6,9	6,8	7,3	7,1
PERFORMANCE CONDITION: Air 35°C/ Water 28°C/ Humid. 80%				
Cooling capacity (kW)	6,0	7,3	9,0	11,2

* The data above is for reference only. For specific data, please refer to the nameplate on the unit.

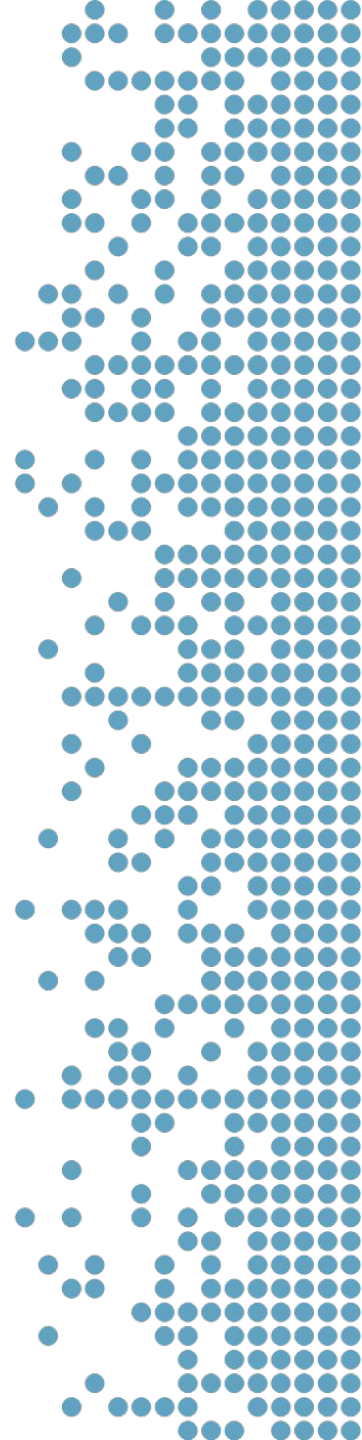


Technical details

Model	MTC130	MTC160	MTC210	MTC260
SKU	77582	77581	77583	77580
TECHNICAL SPECIFICATIONS				
Advised pool volume (m ³) *	35~65	40~70	50~90	60~120
Operating air temperature (°C)	-10°C~43°C			
Casing	Aluminum-alloy Casing			
Heat exchanger	Twisted Titanium Heat Exchanger			
Power supply	230V~/1Ph/50Hz			
Rated input power (kW)	0.32~2.00	0.38~2.33	0.45~3.00	0.84~3.91
Input power at 50% speed (kW)	0,62	0,75	0,92	1,26
Rated input current (A)	1.39~8.70	1.66~10.1	1.96~13.00	3.65~17.00
Sound level at 1m dB(A)	41.0~52.0	41.2~54.9	42.8~54.7	41.5~55.2
Sound level 50% at 1m dB(A)	45,8	46,5	45,9	46,0
Sound level at 10m dB(A)	21.0~32.0	21.2~34.9	32.8~34.7	31.5~35.2
Advised water flux (m ³ /h)	4~6	5~7	8~10	10~12
Water connection (mm)	50			
Net dimension LxWxH (mm)	780x710x656	780x710x656	780x710x656	780x710x756
Net Weight (kg)	67	70	77	88
Qty per 20'FT/40'HQ (sets)	54/123	54/123	54/123	36/123

* The data above is for reference only. For specific data, please refer to the nameplate on the unit.

* Advised pool volume applies to a private pool with isothermal cover, from April to September.



Technical details

Model	MTC130	MTC160	MTC210	MTC260
SKU	77582	77581	77583	77580
Maximum input current (A)	12,0	13,5	17,0	20,0
Breaker rated current (A)	14,0	16,0	21,0	24,0
Power cord (mm ²)	3x2.5	3x2.5	3x4	3x4
R32 Gas Weight (g)	750,0	900,0	1200,0	2000,0
Gross Weight (kg)	79,0	82,0	89,0	100,0
Packaging dimension LxWxH (mm)	750×820×690	750×820×690	750×820×690	750×820×790

* The data above is for reference only. For specific data, please refer to the nameplate on the unit.

